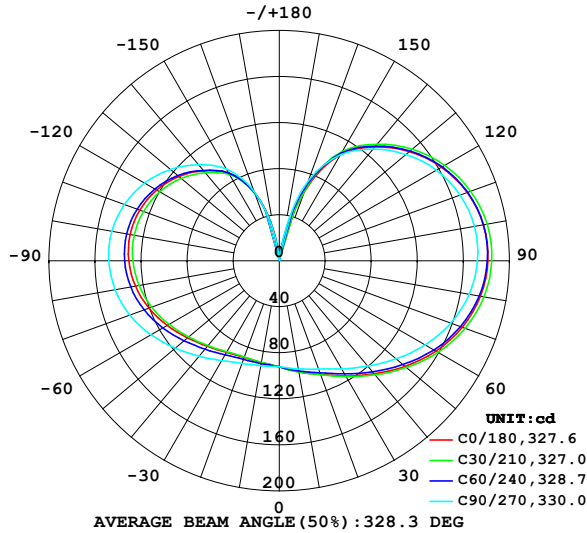


LUMINAIRE PHOTOMETRIC TEST REPORT

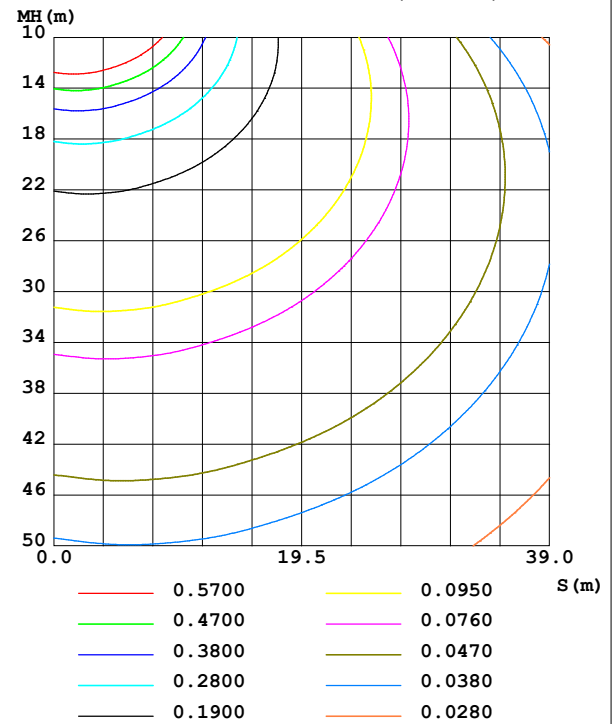
NAME: 99LED835W	TYPE:	WEIGHT: 1
SPEC.:	DIM.: F60	SERIAL No.: 0
MFR.: Elmark Industries JSC	SUR.: round	Shielding Angle:

DATA OF LAMP		PHOTOMETRIC DATA			
MODEL	99LED835W	I _{max} (cd)	184.7	S/MH (C0/180)	1.60
NOMINAL POWER (W)	11	LOR (%)	131.6	S/MH (C90/270)	1.77
RATED VOLTAGE (V)	230	TOTAL FLUX (lm)	1658.4	η UP, DN (C0-180)	34.7, 34.6
NOMINAL FLUX (lm)	1260	CIE CLASS	DIFFUSE	η UP, DN (C180-360)	31.0, 31.3
LAMPS INSIDE	1	η up (%)	65.7	CIBSE SHR NOM	2.00
TEST VOLTAGE (V)	230	η down (%)	65.9	CIBSE SHR MAX	2.00

LUMINOUS INTENSITY DISTRIBUTION DIAGRAM



C0 PLANE ISOLUX DIAGRAM (UNIT:lx)



C Range: 0 - 360DEG
C Interval: 10.0DEG
Test Speed: HIGH
Temperature: 25.3°C
Operators:
Test Date: 24 October 2022

γ Range: 0 - 180DEG
γ Interval: 2.5DEG
Test System: EVERFINE GO-2000A_V1 SYSTEM V2.00.456
Humidity: 65.0%
Test Distance: 6.265m [K=1.0000]
Remarks:

ZONAL FLUX DIAGRAM

ZONAL FLUX DIAGRAM:

γ	C0	C45	C90	C135	C180	C225	C270	C315	γ	Φ zone	Φ total	%lum, lamp
10	98.06	97.71	95.38	92.30	89.76	90.17	92.63	95.71	0- 10	8.898	8.898	0.54,0.71
20	105.2	104.7	100.2	94.20	89.39	89.92	94.93	100.8	10- 20	27.13	36.02	2.17,2.86
30	115.6	115.2	108.5	99.29	91.87	92.53	100.2	109.3	20- 30	46.57	82.60	4.98,6.56
40	128.3	128.1	119.5	107.5	97.18	97.87	108.3	120.2	30- 40	68.32	150.9	9.1,12
50	142.7	142.9	132.5	117.5	104.2	104.8	118.2	132.8	40- 50	92.12	243.0	14.7,19.3
60	157.2	157.7	146.4	128.6	112.5	112.8	128.7	145.6	50- 60	117.0	360.1	21.7,28.6
70	169.1	170.2	158.6	138.8	120.5	120.5	138.1	156.7	60- 70	140.6	500.7	30.2,39.7
80	177.5	179.0	167.6	146.4	126.9	126.4	144.8	164.4	70- 80	159.4	660.0	39.8,52.4
90	181.3	183.1	172.2	150.7	130.7	129.8	148.1	167.8	80- 90	170.6	830.6	50.1,65.9
100	180.2	182.3	172.2	151.3	131.6	130.5	147.7	166.7	90-100	172.6	1003	60.5,79.6
110	173.8	176.1	167.2	147.5	129.0	127.7	143.2	160.9	100-110	164.9	1168	70.4,92.7
120	162.8	165.2	157.7	139.8	123.0	121.6	135.0	151.1	110-120	148.1	1316	79.4,104
130	147.7	150.1	143.8	128.6	114.0	112.7	123.6	137.3	120-130	124.5	1441	86.9,114
140	129.1	131.6	126.6	114.2	102.1	100.8	108.9	120.3	130-140	96.75	1537	92.7,122
150	106.7	108.6	106.4	97.31	88.31	87.11	92.20	100.6	140-150	68.08	1605	96.8,127
160	63.59	65.63	73.96	69.05	63.45	62.09	64.23	67.86	150-160	39.30	1645	99.2,131
170	11.92	11.94	19.71	22.83	22.06	21.12	20.14	16.73	160-170	12.94	1658	100,132
180	1.232	1.229	1.231	1.224	1.240	1.235	1.234	1.223	170-180	0.6700	1658	100,132
DEG	LUMINOUS INTENSITY:cd									UNIT:lm		

Conical surface Flux(90deg): 193.9 lm

%lum = 11.7%

%lamp = 15.4%

Conical surface Flux(130deg): 427.65 lm

%lum = 25.8%

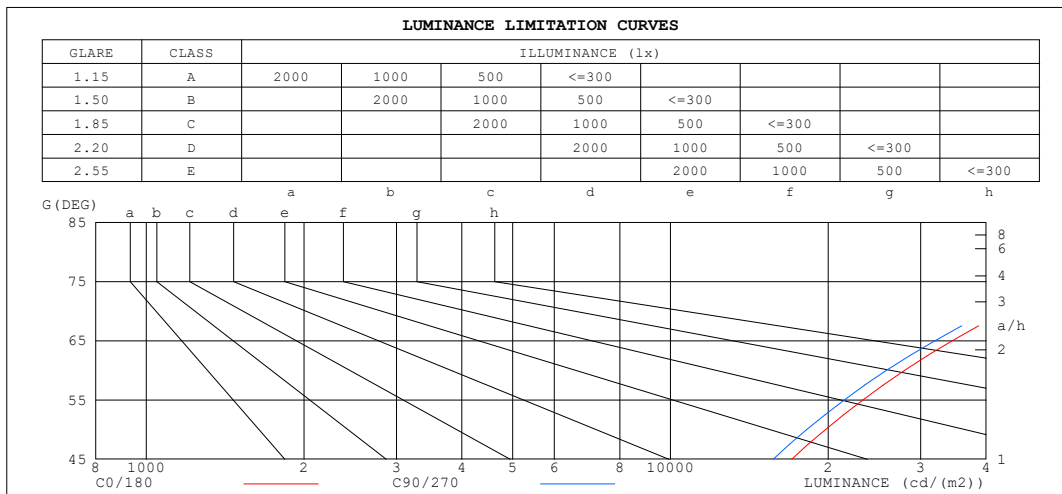
%lamp = 33.9%

C Range: 0 - 360DEG
C Interval: 10.0DEG
Test Speed: HIGH
Temperature:25.3°C
Operators:
Test Date:24 October 2022

γ Range: 0 - 180DEG
 γ Interval: 2.5DEG
Test System:EVERFINE GO-2000A_V1 SYSTEM V2.00.456
Humidity:65.0%
Test Distance:6.265m [K=1.0000]
Remarks:

LUMINANCE LIMITATION CURVES

NAME: 99LED835W	TYPE:	WEIGHT: 1
SPEC.:	DIM.: F60	SERIAL No.: 0
MFR.: Elmark Industries JSC	SUR.: round	Shielding Angle:



LUMINANCE cd/(m2)		
G (DEG)	C0/180	C90/270
85	183730	172569
80	90926	85143
75	59745	55752
70	43981	40912
65	34416	31901
60	27965	25828
55	23277	21457
50	19753	18194
45	17035	15695

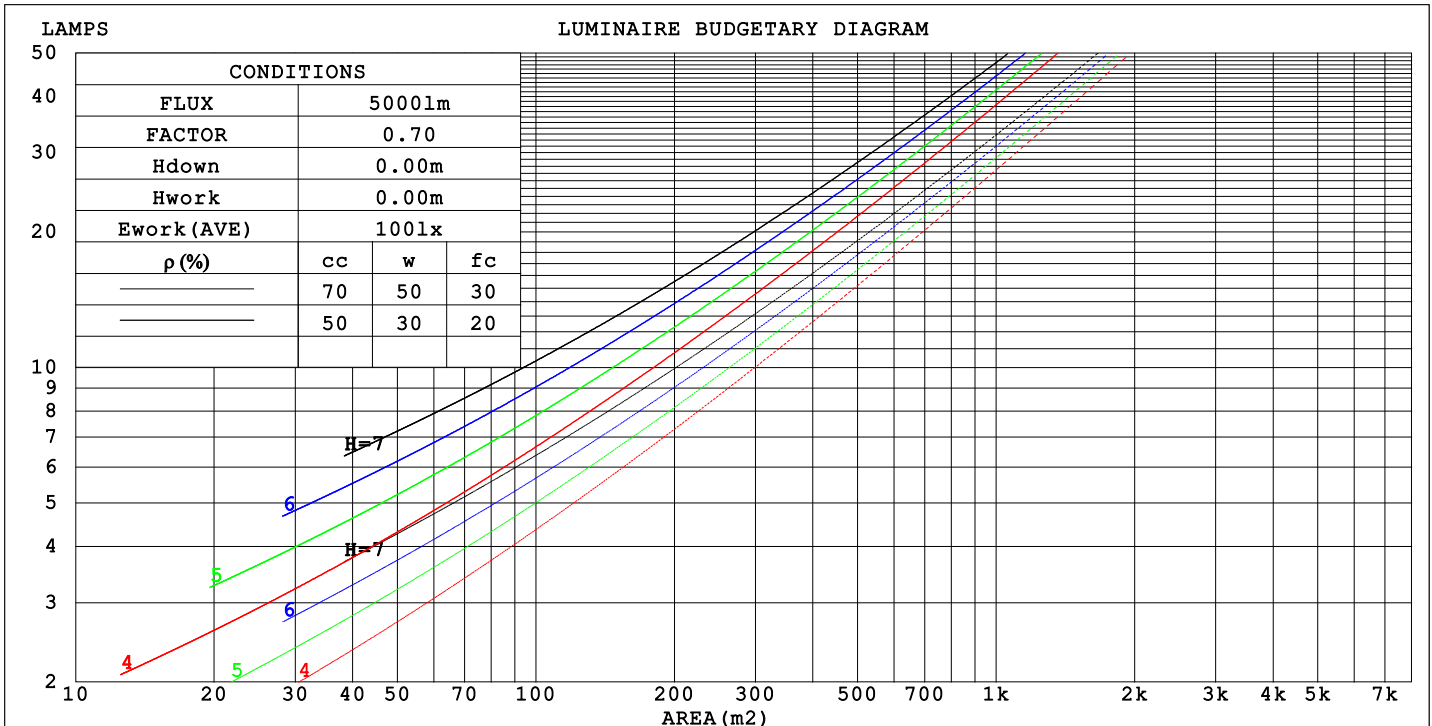
C Range: 0 - 360DEG
C Interval: 10.0DEG
Test Speed: HIGH
Temperature: 25.3°C
Operators:
Test Date: 24 October 2022

γ Range: 0 - 180DEG
γ Interval: 2.5DEG
Test System: EVERFINE GO-2000A_V1 SYSTEM V2.00.456
Humidity: 65.0%
Test Distance: 6.265m [K=1.0000]
Remarks:

CU AND LUMINAIRE BUDGETARY ESTIMATE DIAGRAM

NAME: 99LED835W	TYPE:	WEIGHT: 1
SPEC.:	DIM.: F60	SERIAL No.: 0
MFR.: Elmark Industries JSC	SUR.: round	Shielding Angle:

pcc	80%			70%			50%			30%			10%			0
pw	50%	30%	10%	50%	30%	10%	50%	30%	10%	50%	30%	10%	50%	30%	10%	0
pfc	20%			20%			20%			20%			20%			0
RCR	RCR:Room Cavity Ratio															



C Range: 0 - 360DEG
C Interval: 10.0DEG
Test Speed: HIGH
Temperature:25.3°C
Operators:
Test Date:24 October 2022

γ Range: 0 - 180DEG
γ Interval: 2.5DEG
Test System:EVERFINE GO-2000A_V1 SYSTEM V2.00.456
Humidity:65.0%
Test Distance:6.265m [K=1.0000]
Remarks:

WEC AND CCEC

NAME: 99LED835W	TYPE:	WEIGHT: 1
SPEC.:	DIM.: F60	SERIAL No.: 0
MFR.: Elmark Industries JSC	SUR.: round	Shielding Angle:

pcc	80%			70%			50%			30%			10%			0
pw	50%	30%	10%	50%	30%	10%	50%	30%	10%	50%	30%	10%	50%	30%	10%	0
pfc	20%			20%			20%			20%			20%			0
RCR	RCR:Room Cavity Ratio						Wall Exitance Coefficients(WEC)									
0.0																
1.0	.552	.314	.099	.523	.298	.095	.467	.268	.086	.416	.240	.077	.370	.214	.069	
2.0	.458	.251	.077	.431	.237	.073	.380	.211	.066	.333	.187	.059	.290	.164	.052	
3.0	.397	.212	.063	.373	.200	.060	.327	.177	.054	.284	.155	.048	.244	.135	.042	
4.0	.353	.183	.054	.330	.173	.051	.288	.153	.046	.248	.133	.040	.212	.115	.035	
5.0	.318	.162	.047	.297	.153	.044	.258	.134	.040	.222	.117	.035	.188	.100	.030	
6.0	.289	.145	.041	.270	.136	.039	.234	.120	.035	.200	.104	.031	.169	.089	.026	
7.0	.265	.131	.037	.248	.123	.035	.214	.108	.031	.183	.094	.027	.154	.080	.023	
8.0	.245	.120	.034	.229	.113	.032	.198	.099	.028	.169	.085	.025	.141	.073	.021	
9.0	.228	.110	.031	.213	.104	.029	.184	.091	.026	.156	.078	.022	.131	.066	.019	
10.0	.212	.102	.028	.198	.096	.027	.171	.084	.024	.146	.072	.021	.122	.061	.018	

pcc	80%			70%			50%			30%			10%			0
pw	50%	30%	10%	50%	30%	10%	50%	30%	10%	50%	30%	10%	50%	30%	10%	0
pfc	20%			20%			20%			20%			20%			0
RCR	RCR:Room Cavity Ratio						Ceiling Cavity Exitance Coefficients (CCEC)									
0.0	.751	.751	.751	.642	.642	.642	.438	.438	.438	.252	.252	.252	.080	.080	.080	
1.0	.752	.709	.670	.643	.608	.577	.440	.419	.399	.253	.242	.232	.081	.078	.075	
2.0	.745	.681	.628	.638	.587	.543	.437	.406	.379	.252	.236	.222	.081	.076	.072	
3.0	.735	.662	.603	.630	.571	.523	.433	.396	.367	.250	.232	.216	.080	.075	.071	
4.0	.726	.647	.586	.623	.559	.509	.428	.389	.359	.248	.228	.212	.080	.074	.070	
5.0	.716	.635	.575	.615	.549	.500	.423	.384	.353	.245	.225	.209	.079	.074	.069	
6.0	.706	.625	.567	.607	.541	.494	.419	.379	.349	.243	.223	.208	.078	.073	.069	
7.0	.697	.617	.561	.600	.535	.489	.414	.375	.346	.241	.221	.206	.078	.072	.068	
8.0	.689	.610	.556	.593	.529	.485	.410	.372	.344	.239	.219	.205	.077	.072	.068	
9.0	.681	.604	.553	.586	.525	.482	.406	.369	.342	.237	.218	.204	.077	.071	.068	
10.0	.673	.599	.550	.580	.520	.480	.403	.366	.341	.235	.216	.204	.076	.071	.067	

C Range: 0 - 360DEG
C Interval: 10.0DEG
Test Speed: HIGH
Temperature:25.3°C
Operators:
Test Date:24 October 2022

γ Range: 0 - 180DEG
γ Interval: 2.5DEG
Test System:EVERFINE GO-2000A_V1 SYSTEM V2.00.456
Humidity:65.0%
Test Distance:6.265m [K=1.0000]
Remarks:

UGR(Unified Glare Rating) Table

NAME: 99LED835W					TYPE:			WEIGHT: 1			
SPEC.:					DIM.: F60			SERIAL No.: 0			
MFR.: Elmark Industries JSC					SUR.: round			Shielding Angle:			
ceiling/cavity	0.7	0.7	0.5	0.5	0.3	0.7	0.7	0.5	0.5	0.3	
walls	0.5	0.3	0.5	0.3	0.3	0.5	0.3	0.5	0.3	0.3	
working plane	0.2	0.2	0.2	0.2	0.2	0.2	0.2	0.2	0.2	0.2	
Room dimensions		Viewed crosswise					Viewed endwise				
x = 2H	y = 2H	20.4	21.5	21.3	22.4	23.5	20.1	21.2	20.9	22.1	23.2
	3H	23.9	24.9	24.8	25.9	27.0	23.6	24.6	24.5	25.5	26.7
	4H	25.9	26.9	26.8	27.8	29.0	25.6	26.5	26.5	27.4	28.6
	6H	28.1	29.0	29.0	29.9	31.2	27.7	28.6	28.6	29.6	30.8
	8H	29.3	30.2	30.3	31.1	32.4	28.9	29.8	29.9	30.7	32.0
	12H	30.7	31.5	31.6	32.5	33.7	30.3	31.1	31.2	32.1	33.3
4H	2H	21.5	22.4	22.4	23.3	24.6	21.3	22.2	22.2	23.1	24.3
	3H	25.1	25.9	26.1	26.9	28.1	24.9	25.7	25.8	26.6	27.9
	4H	27.2	28.0	28.2	29.0	30.2	26.9	27.7	27.9	28.7	29.9
	6H	29.6	30.2	30.5	31.2	32.5	29.2	29.9	30.2	30.9	32.2
	8H	30.8	31.5	31.8	32.5	33.8	30.5	31.1	31.5	32.1	33.4
	12H	32.3	32.9	33.3	33.9	35.2	31.9	32.5	32.9	33.5	34.9
8H	4H	28.0	28.6	29.0	29.6	30.9	27.8	28.4	28.7	29.4	30.7
	6H	30.6	31.1	31.6	32.1	33.4	30.3	30.9	31.3	31.9	33.2
	8H	32.0	32.5	33.0	33.5	34.9	31.8	32.3	32.8	33.3	34.6
	12H	33.7	34.1	34.7	35.2	36.5	33.4	33.8	34.4	34.9	36.2
12H	4H	28.2	28.8	29.2	29.8	31.1	28.0	28.6	29.0	29.6	30.9
	6H	30.9	31.4	31.9	32.4	33.7	30.7	31.2	31.7	32.2	33.5
	8H	32.5	32.9	33.5	33.9	35.3	32.2	32.7	33.3	33.7	35.1
Variations with the observer position at spacings(CIE Pub.117):											
S = 1.0H		+ 0.1 / - 0.1					+ 0.1 / - 0.1				
1.5H		+ 0.2 / - 0.3					+ 0.2 / - 0.3				
2.0H		+ 0.3 / - 0.4					+ 0.3 / - 0.4				

CIE Pub.117, 1260 lm Total Lamp Luminous Flux Correct (8log(F/F0) = 0.8)
Area: 0.011304 m2

C Range: 0 - 360DEG
C Interval: 10.0DEG
Test Speed: HIGH
Temperature:25.3°C
Operators:
Test Date:24 October 2022

γ Range: 0 - 180DEG
γ Interval: 2.5DEG
Test System:EVERFINE GO-2000A_V1 SYSTEM V2.00.456
Humidity:65.0%
Test Distance:6.265m [K=1.0000]
Remarks:

UTILIZATION FACTORS TABLE

NAME: 99LED835W	TYPE:	WEIGHT: 1
SPEC.:	DIM.: F60	SERIAL No.: 0
MFR.: Elmark Industries JSC	SUR.: round	Shielding Angle:

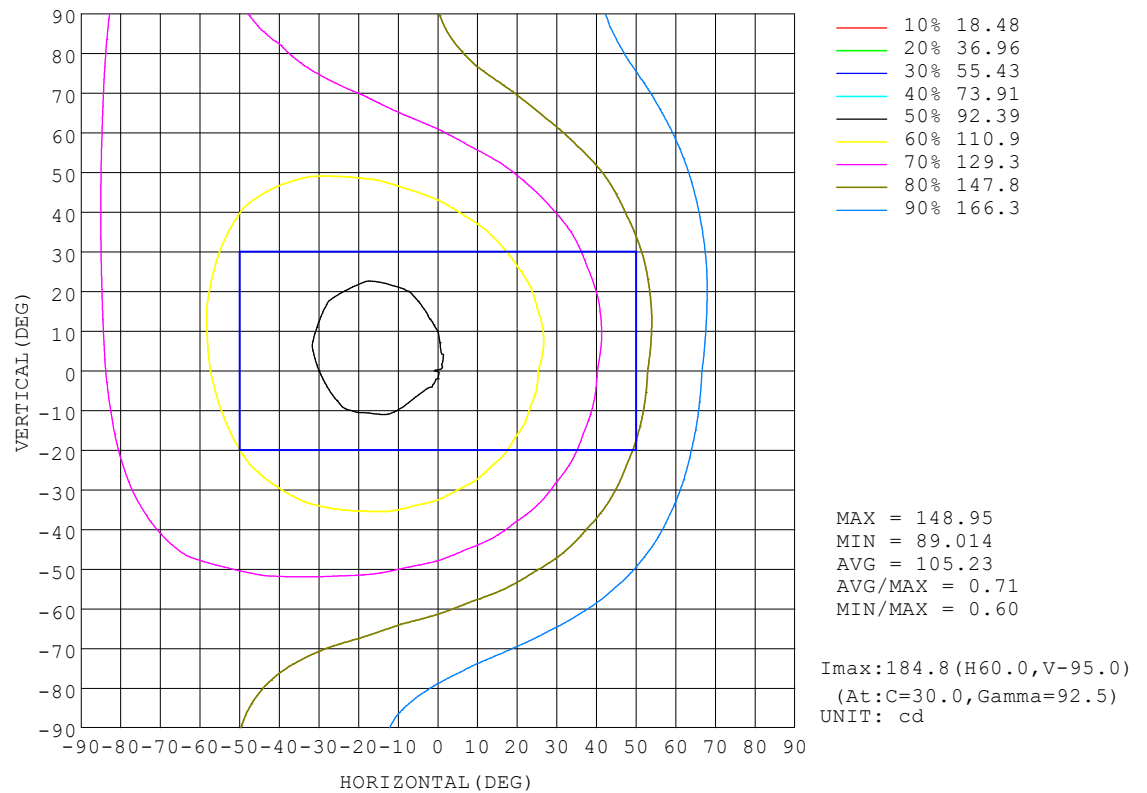
REFLECTANCE										
Ceiling	0.8	0.8	0.8	0.7	0.7	0.7	0.5	0.5	0.5	0
Walls	0.7	0.5	0.3	0.7	0.5	0.3	0.7	0.5	0.3	0
Working plane	0.2	0.2	0.2	0.2	0.2	0.2	0.2	0.2	0.2	0
ROOM INDEX	UTILIZATION FACTORS (PERCENT) $k(RI) \times RCR = 5$									
$k = 0.60$	47	30	20	44	29	20	40	26	18	9
0.80	58	39	28	54	37	27	48	33	24	12
1.00	67	48	36	63	45	34	54	43	31	16
1.25	76	57	44	71	54	42	61	47	37	19
1.50	83	64	51	77	60	48	66	52	43	22
2.00	93	76	63	86	71	59	73	61	51	28
2.50	100	84	71	92	78	67	78	67	58	31
3.00	105	90	79	97	84	73	82	72	63	35
4.00	112	99	89	103	92	83	87	78	71	39
5.00	117	106	96	108	98	89	91	83	76	43
ROOM INDEX	UF(total)									Direct
According to DIN EN 13032-2 2004			Suspended					SHRNOM = 1.25		

C Range: 0 - 360DEG
C Interval: 10.0DEG
Test Speed: HIGH
Temperature: 25.3°C
Operators:
Test Date: 24 October 2022

γ Range: 0 - 180DEG
γ Interval: 2.5DEG
Test System: EVERFINE GO-2000A_V1 SYSTEM V2.00.456
Humidity: 65.0%
Test Distance: 6.265m [K=1.0000]
Remarks:

ISOCANDELA DIAGRAM

NAME: 99LED835W	TYPE:	WEIGHT: 1
SPEC.:	DIM.: F60	SERIAL No.: 0
MFR.: Elmark Industries JSC	SUR.: round	Shielding Angle:

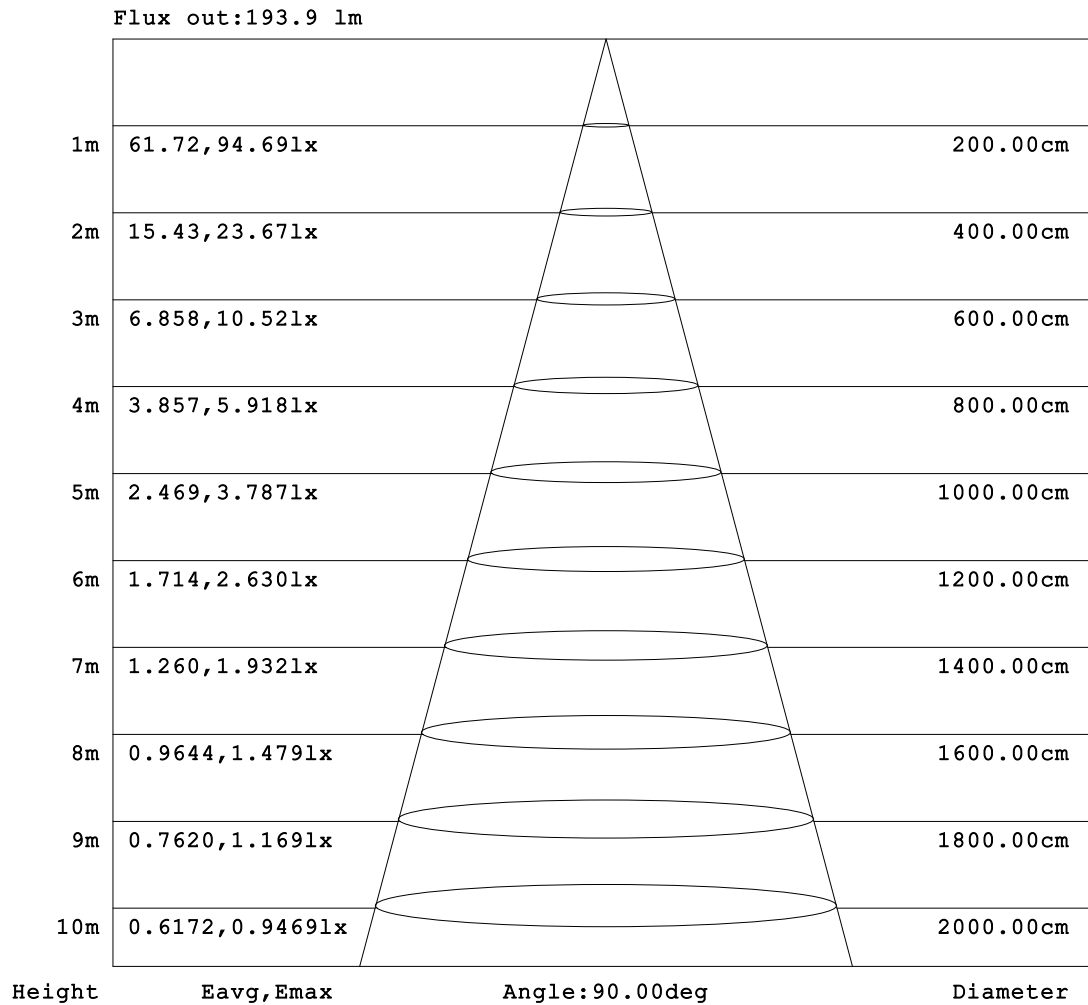


C Range: 0 - 360DEG
 C Interval: 10.0DEG
 Test Speed: HIGH
 Temperature: 25.3°C
 Operators:
 Test Date: 24 October 2022

γ Range: 0 - 180DEG
 γ Interval: 2.5DEG
 Test System: EVERFINE GO-2000A_V1 SYSTEM V2.00.456
 Humidity: 65.0%
 Test Distance: 6.265m [K=1.0000]
 Remarks:

AAI Figure

NAME: 99LED835W	TYPE:	WEIGHT: 1
SPEC.:	DIM.: F60	SERIAL No.: 0
MFR.: Elmark Industries JSC	SUR.: round	Shielding Angle:



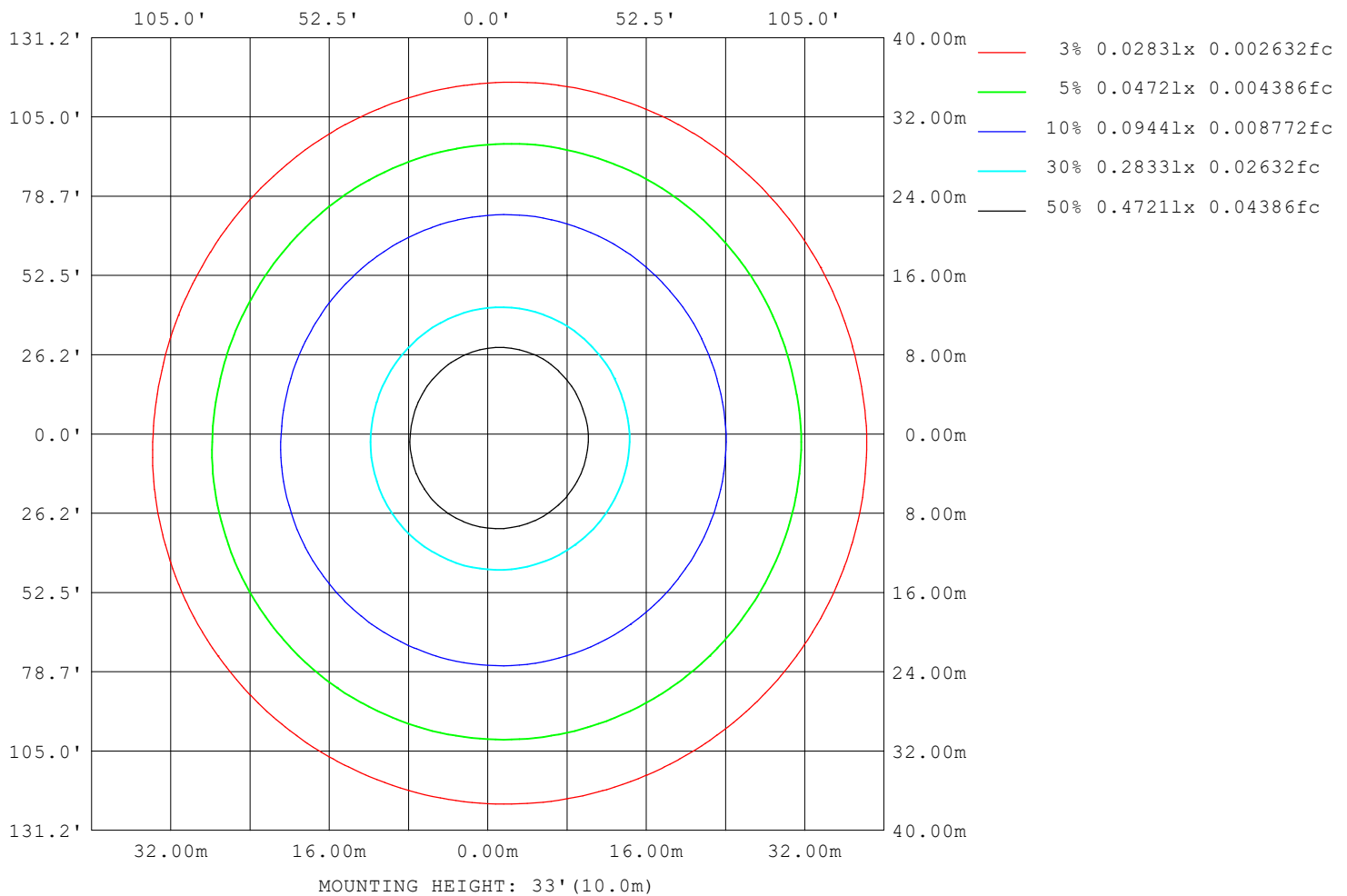
Note: The Curves indicate the illuminated area and the average illumination when the luminaire is at different distance.

C Range: 0 - 360DEG
 C Interval: 10.0DEG
 Test Speed: HIGH
 Temperature: 25.3°C
 Operators:
 Test Date: 24 October 2022

γ Range: 0 - 180DEG
 γ Interval: 2.5DEG
 Test System: EVERFINE GO-2000A_V1 SYSTEM V2.00.456
 Humidity: 65.0%
 Test Distance: 6.265m [K=1.0000]
 Remarks:

ISOLUX DIAGRAM

NAME: 99LED835W	TYPE:	WEIGHT: 1
SPEC.:	DIM.: F60	SERIAL No.: 0
MFR.: Elmark Industries JSC	SUR.: round	Shielding Angle:



C Range: 0 - 360DEG
C Interval: 10.0DEG
Test Speed: HIGH
Temperature: 25.3°C
Operators:
Test Date: 24 October 2022

γ Range: 0 - 180DEG
γ Interval: 2.5DEG
Test System: EVERFINE GO-2000A_V1 SYSTEM V2.00.456
Humidity: 65.0%
Test Distance: 6.265m [K=1.0000]
Remarks:

LED Avg.L Report

NAME: 99LED835W	TYPE:	WEIGHT: 1
SPEC.:	DIM.: F60	SERIAL No.: 0
MFR.: Elmark Industries JSC	SUR.: round	Shielding Angle:

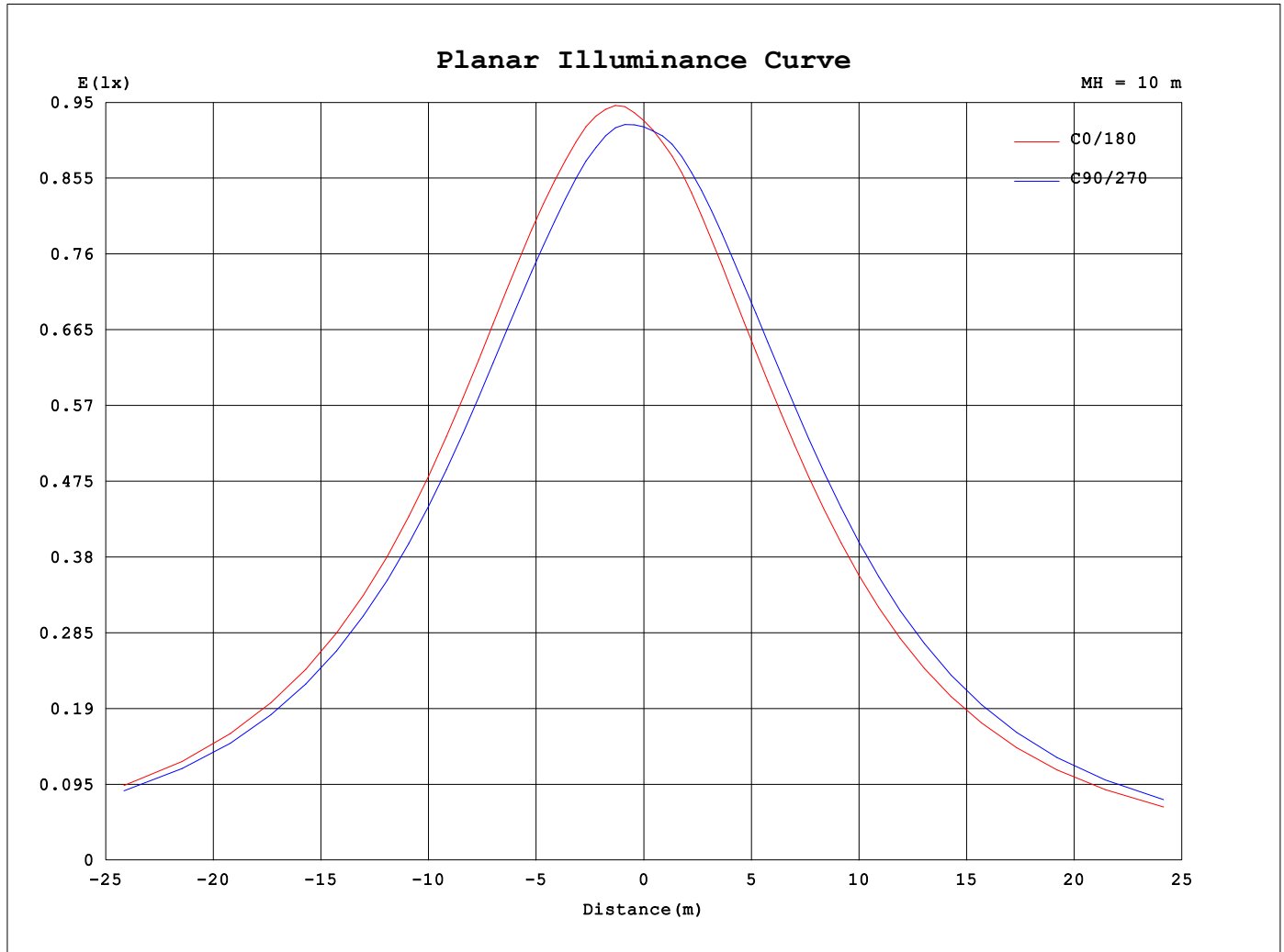
AvgL	cd/m2
L_0~180 (65) av	29320
L_0~180 (75) av	50898
L_0~180 (85) av	156882
L_90~270 (65) av	29985
L_90~270 (75) av	52198
L_90~270 (85) av	161051
L_45 (65) av	29651
L_45 (75) av	51522
L_45 (85) av	158759

Standard: GB/T 29293-2012

C Range: 0 - 360DEG
C Interval: 10.0DEG
Test Speed: HIGH
Temperature:25.3°C
Operators:
Test Date:24 October 2022

γ Range: 0 - 180DEG
γ Interval: 2.5DEG
Test System:EVERFINE GO-2000A_V1 SYSTEM V2.00.456
Humidity:65.0%
Test Distance:6.265m [K=1.0000]
Remarks:

Planar Illuminance Curve



C Range: 0 - 360DEG
 C Interval: 10.0DEG
 Test Speed: HIGH
 Temperature: 25.3°C
 Operators:
 Test Date: 24 October 2022

γ Range: 0 - 180DEG
 γ Interval: 2.5DEG
 Test System: EVERFINE GO-2000A_V1 SYSTEM V2.00.456
 Humidity: 65.0%
 Test Distance: 6.265m [K=1.0000]
 Remarks:

LUMINOUS DISTRIBUTION INTENSITY DATA

NAME: 99LED835W	TYPE:	WEIGHT: 1
SPEC.:	DIM.: F60	SERIAL No.: 0
MFR.: Elmark Industries JSC	SUR.: round	Shielding Angle:

Table--1

UNIT: cd

C (DEG) γ (DEG)	0	10	20	30	40	50	60	70	80	90	100	110	120	130	140	150	160	170	180
0	92.2	92.2	92.2	92.2	92.2	92.2	92.2	92.2	92.2	92.2	92.2	92.2	92.2	92.2	92.2	92.2	92.2	92.2	92.2
5	95.1	95.2	95.2	95.2	95.0	94.8	94.6	94.3	94.0	93.6	93.2	92.8	92.4	92.0	91.7	91.3	91.1	90.8	90.5
10	98.1	98.3	98.2	98.2	97.9	97.6	97.1	96.6	96.0	95.4	94.7	94.0	93.3	92.6	92.0	91.3	90.8	90.3	89.8
15	102	102	102	102	101	101	100	99.4	98.5	97.5	96.5	95.4	94.4	93.4	92.4	91.4	90.7	90.0	89.2
20	105	106	106	105	105	104	103	103	101	100	98.9	97.5	96.1	94.8	93.6	92.3	91.3	90.4	89.4
25	110	110	110	110	110	109	108	107	105	104	102	100	98.7	97.0	95.4	93.9	92.6	91.4	90.1
30	116	116	116	116	116	115	113	112	110	108	106	104	102	100	98.4	96.4	94.9	93.5	91.9
35	122	122	123	123	122	121	120	118	116	114	111	109	107	104	102	99.8	97.9	96.2	94.3
40	128	129	129	129	129	128	126	124	122	120	117	114	111	109	106	104	101	99.4	97.2
45	135	137	137	137	136	135	133	131	128	126	123	120	117	114	111	108	105	103	100
50	143	144	144	144	143	142	140	138	135	133	129	126	123	119	116	112	110	107	104
55	150	152	152	152	151	150	148	146	143	139	136	132	129	125	121	118	114	111	108
60	157	159	159	159	158	157	155	153	150	146	143	139	135	130	127	123	119	116	112
65	164	165	166	166	165	164	162	159	156	153	149	145	140	136	132	128	124	120	117
70	169	171	171	172	171	170	167	165	162	159	154	150	145	141	137	132	128	125	121
75	174	176	176	177	175	175	172	170	167	164	159	155	150	145	141	136	132	128	124
80	177	180	180	181	179	179	176	175	171	168	163	158	153	149	144	139	135	131	127
85	180	182	182	183	182	182	179	177	174	170	166	161	156	151	147	142	138	134	129
90	181	184	184	184	183	183	181	179	175	172	167	163	158	153	148	143	139	135	131
95	181	184	184	185	183	183	181	180	176	173	168	164	159	154	149	144	140	136	132
100	180	183	182	183	182	182	180	179	175	172	167	164	158	154	149	144	140	136	132
105	178	180	180	181	180	180	178	177	173	170	166	162	157	152	148	143	139	135	131
110	174	176	176	177	176	176	174	173	170	167	163	159	154	150	145	141	137	133	129
115	169	171	171	172	171	171	169	168	165	163	158	155	151	146	142	138	134	131	126
120	163	165	165	166	165	165	163	163	160	158	153	150	146	142	138	134	130	127	123
125	156	158	158	159	158	158	156	156	153	151	147	145	140	136	133	129	126	123	119
130	148	150	150	151	150	150	148	148	145	144	140	138	134	130	127	123	120	117	114
135	139	141	141	142	141	142	140	139	137	136	132	130	126	123	120	117	114	112	108
140	129	131	131	132	131	132	130	130	128	127	123	122	118	116	113	110	107	105	102
145	119	121	121	122	121	122	120	120	118	117	114	113	110	107	105	102	100	98.2	95.6
150	107	108	108	110	109	109	108	109	107	106	104	103	100	98.4	96.2	94.2	92.2	90.5	88.3
155	88.1	89.7	90.8	92.2	90.4	90.1	91.1	93.5	92.2	92.1	90.1	89.4	87.3	85.8	84.3	82.4	81.0	79.5	77.7
160	63.6	63.8	64.3	65.8	65.0	66.3	70.3	73.6	73.9	74.0	72.7	72.2	70.6	69.6	68.5	67.3	66.2	65.1	63.4
165	35.5	33.2	31.9	32.9	34.0	39.2	44.3	47.6	48.8	49.4	48.9	49.8	49.3	49.2	48.3	47.8	47.2	46.5	45.4
170	11.9	10.0	8.55	8.71	10.4	13.4	15.2	17.4	18.2	19.7	20.7	22.1	22.3	23.0	22.7	22.8	22.4	22.5	22.1
175	1.26	1.24	1.24	1.23	1.25	1.23	1.25	1.23	1.27	1.24	1.29	1.27	1.36	1.54	1.67	1.91	1.91	1.99	2.06
180	1.23	1.24	1.23	1.24	1.23	1.23	1.23	1.23	1.23	1.23	1.23	1.23	1.23	1.22	1.23	1.22	1.23	1.22	1.24

C Range: 0 - 360DEG

C Interval: 10.0DEG

Test Speed: HIGH

Temperature:25.3°C

Operators:

Test Date:24 October 2022

γ Range: 0 - 180DEG

γ Interval: 2.5DEG

Test System:EVERFINE GO-2000A_V1 SYSTEM V2.00.456

Humidity:65.0%

Test Distance:6.265m [K=1.0000]

Remarks:

LUMINOUS DISTRIBUTION INTENSITY DATA

NAME: 99LED835W	TYPE:	WEIGHT: 1
SPEC.:	DIM.: F60	SERIAL No.: 0
MFR.: Elmark Industries JSC	SUR.: round	Shielding Angle:

Table--2

UNIT: cd

C (DEG) γ (DEG)	190	200	210	220	230	240	250	260	270	280	290	300	310	320	330	340	350		
0	92.2	92.2	92.2	92.2	92.2	92.2	92.2	92.2	92.2	92.2	92.2	92.2	92.2	92.2	92.2	92.2	92.2		
5	90.5	90.4	90.5	90.6	90.9	91.1	91.4	91.7	92.1	92.4	92.8	93.2	93.6	93.9	94.3	94.5	94.8		
10	89.6	89.6	89.7	89.9	90.4	90.8	91.4	92.0	92.6	93.3	94.0	94.7	95.4	96.0	96.6	97.1	97.6		
15	89.0	88.9	89.1	89.4	90.0	90.7	91.5	92.4	93.4	94.5	95.6	96.6	97.6	98.6	99.4	100	101		
20	89.0	88.9	89.1	89.5	90.3	91.2	92.3	93.5	94.9	96.2	97.7	98.9	100	101	103	104	104		
25	89.6	89.5	89.7	90.2	91.2	92.3	93.7	95.3	97.1	98.8	101	102	104	105	107	108	109		
30	91.3	91.1	91.4	92.0	93.1	94.4	96.2	98.1	100	102	104	106	108	110	112	113	114		
35	93.6	93.3	93.7	94.4	95.7	97.2	99.3	101	104	106	109	111	113	116	117	119	120		
40	96.3	96.0	96.3	97.1	98.6	100	103	105	108	111	114	117	119	121	123	125	127		
45	99.5	99.0	99.4	100	102	104	107	110	113	116	120	122	125	128	130	132	133		
50	103	102	103	104	106	108	111	114	118	122	125	128	131	134	136	139	140		
55	107	106	107	108	110	112	116	119	123	127	131	134	138	141	143	146	148		
60	111	110	111	112	114	117	121	124	129	133	137	141	144	147	150	153	155		
65	115	114	114	116	118	121	125	129	134	138	142	146	150	153	156	159	161		
70	119	118	118	119	122	125	129	133	138	143	147	151	155	159	161	164	166		
75	122	121	121	122	125	128	133	137	142	146	151	155	159	163	166	169	171		
80	125	123	124	125	128	131	135	140	145	149	154	158	162	166	169	172	174		
85	127	125	126	127	130	133	137	142	147	152	156	161	164	169	171	175	177		
90	128	127	127	128	131	134	139	143	148	153	158	162	166	170	173	176	178		
95	129	128	128	129	132	135	139	143	148	153	158	162	166	170	173	176	178		
100	129	128	128	129	132	135	139	143	148	152	157	161	164	169	172	175	177		
105	128	127	127	128	131	134	137	141	146	150	155	159	162	167	169	173	175		
110	127	125	126	127	129	131	135	139	143	147	152	155	159	163	166	169	171		
115	124	123	123	124	126	129	132	136	140	143	147	151	154	159	161	165	166		
120	121	120	120	121	123	125	128	131	135	139	142	146	149	153	155	159	160		
125	117	116	116	117	118	120	123	126	130	133	137	140	143	147	149	152	153		
130	112	111	111	112	113	115	118	121	124	127	130	133	135	139	141	144	145		
135	107	106	106	107	108	109	111	114	117	119	122	125	128	131	133	136	137		
140	101	100	99.9	100	101	103	104	107	109	111	114	117	119	122	123	126	127		
145	94.4	93.7	93.5	93.9	94.6	95.8	97.3	99.2	101	103	106	108	110	113	114	117	117		
150	87.0	86.7	86.8	86.7	87.5	88.1	89.3	90.7	92.2	94.1	95.8	97.8	99.2	102	103	105	106		
155	77.0	76.4	76.4	76.3	76.7	77.0	77.9	78.7	79.9	81.1	82.5	83.9	85.1	87.1	87.5	89.9	89.8		
160	62.8	62.3	62.1	62.0	62.2	62.4	62.9	63.5	64.2	64.9	65.7	66.5	67.1	68.6	68.9	70.1	67.8		
165	44.7	44.1	43.6	43.1	42.9	43.5	43.6	43.9	43.6	44.0	44.0	44.2	43.8	44.3	43.6	43.1	39.9		
170	21.6	21.5	21.1	21.2	21.1	21.4	21.1	20.9	20.1	19.3	18.5	18.0	17.0	16.5	15.4	15.3	14.1		
175	2.05	2.11	2.06	2.12	1.94	1.83	1.63	1.49	1.32	1.25	1.27	1.23	1.26	1.23	1.24	1.22	1.24		
180	1.24	1.24	1.25	1.23	1.24	1.23	1.24	1.23	1.23	1.23	1.23	1.22	1.22	1.23	1.22	1.22	1.21		

C Range: 0 - 360DEG

C Interval: 10.0DEG

Test Speed: HIGH

Temperature:25.3°C

Operators:

Test Date:24 October 2022

γ Range: 0 - 180DEG

γ Interval: 2.5DEG

Test System:EVERFINE GO-2000A_V1 SYSTEM V2.00.456

Humidity:65.0%

Test Distance:6.265m [K=1.0000]

Remarks: